



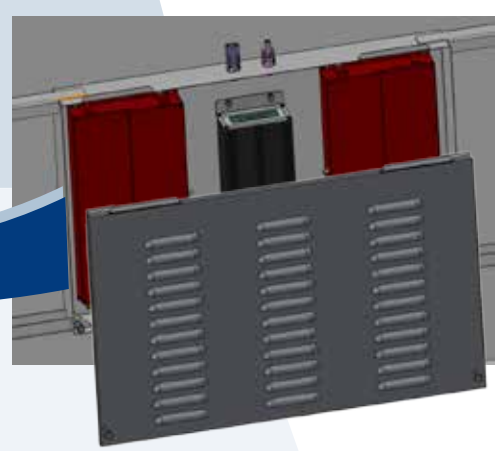
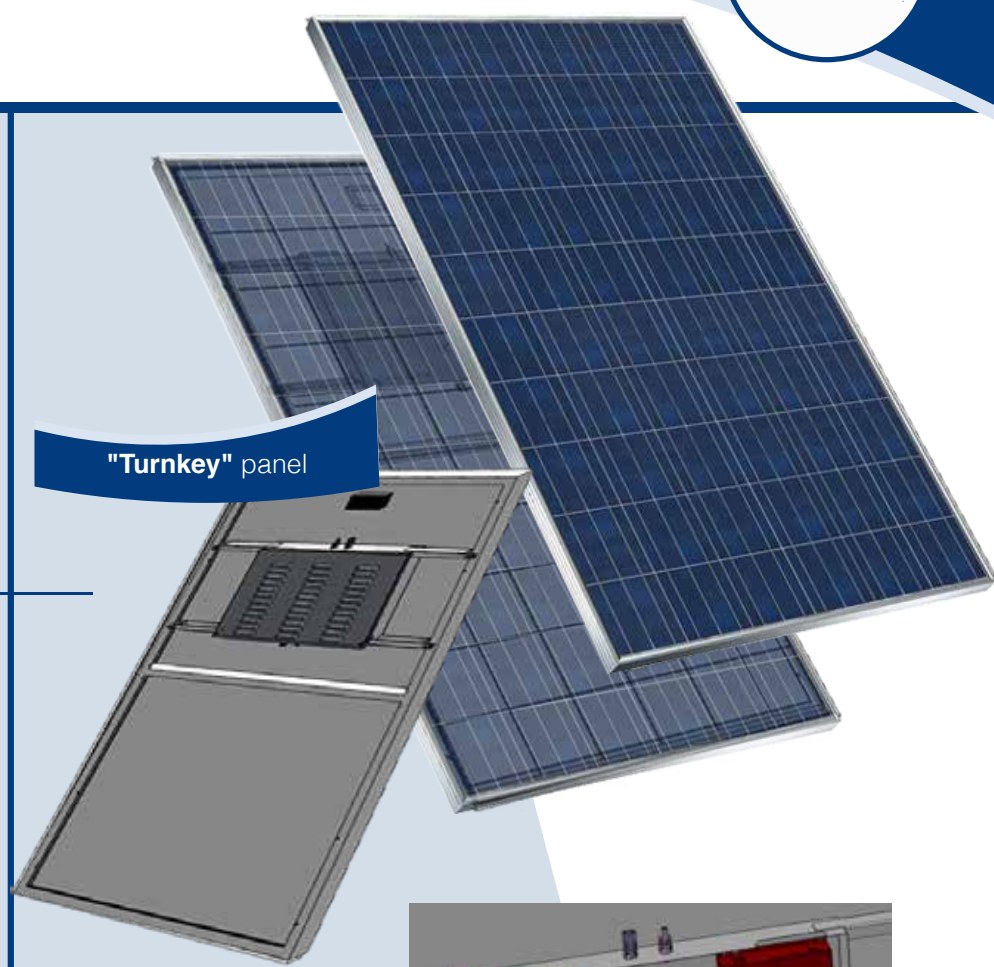
ACTIVE PANEL ZCS

Solar energy is the primary source of energy on earth; directly or indirectly, all the sources of energy derive from solar energy. The quantity of solar energy that reaches earth is about 10 thousand times greater than all the energy used by human beings.

The **ZCS Active Panel** system enables the production and accumulation of electric power on the panel to be integrated with clear advantages in terms of flexibility, convenience and compactness.

The product is available in the following versions

- **“Turnkey”** panel:
system with photovoltaic panel, lithium ion batteries and smart control unit to manage MPPT and batteries
- **“Stand alone”** kit:
The kit does not involve supplying the photovoltaic panel and can be adapted to most of the commercially available modules.








Applications ready for use

- Portable generator using renewable energy
- Movable system on wheels
- Trawl winch supply system

Advantages

Characteristics

- Available in kit and can be adapted to most modules on the market
- Easy to move around
- Light and compact
- Modular and parallelable

 Reliable	 Flexible
 Independent	 Convenient
 Environmentally friendly	



Registered office:
Via Lungarno, 305/A - Terranuova B.ni (AR) - Italy
+39.055.9197.1 (R.A.) +39.055.9197515
www.zcscompany.com - marketing@centrosistemi.it



DATA SHEET



Active Panel ZCS

Type	ZCS-PNL-350	ZCS-PNL-700	ZCS-PNL-1400
Panel			
Peak power	250W	250W	250W
Cells		Polycrystalline Silicon	
Maximum load resistance	2400N/m ²	2400N/m ²	2400N/m ²
Output			
Rated capacity	350Wh	700Wh	1400Wh
Rated voltage	25.9V	25.9V	25.9V
Output range	23.0-29.4V	23.0-29.4V	23.0-29.4V
Rated output current	13.5A	27A	54A
Maximum output current (direct current)	30A	60A	120A
Maximum output current (1s)	48A	90A	180A
Working life (complete exhaustion)	1000 cycles	1000 cycles	1000 cycles
Working life (average exhaustion)	2000 cycles	2000 cycles	2000 cycles
Dimensional features			
Dimensions (WxHxD)	1652x994x46mm	1652x994x46mm	1652x994x46mm
Weight	34kg	36kg	41kg
Protection rating		IP54	
Function and performance			
MPPT efficiency	99.9%	99.9%	99.9%
Auxiliary battery recharging	From a mains supply with an external supply unit		
Mains supply recharging time	1h	2h	4h
General Data			
Temperature Operating Range	-20°C...+60°C	-20°C...+60°C	-20°C...+60°C
Humidity Operating Range	0-95%, without condensation	0-95%, without condensation	0-95%, without condensation
Output connections		MC4 (or equivalent)	
Visual interface	Led	Led	Led

Kit for panel

Type	ZCS-PNL-KIT-350	ZCS-PNL-KIT-700	ZCS-PNL-KIT-1400
Panel input			
Maximum permitted peak power	300W	300W	300W
Cells		Monocrystalline silicon, polycrystalline silicon	
Voltage operating range	20-48V	20-48V	20-48V
Maximum permitted voltage	60V	60V	60V
Output			
Rated capacity	350Wh	700Wh	1400Wh
Rated Voltage	25.9V	25.9V	25.9V
Output range	23.0-29.4V	23.0-29.4V	23.0-29.4V
Rated output current	13.5A	27A	54A
Maximum output current (direct current)	30A	60A	120A
Maximum output current (1s)	48A	90A	180A
Working life (complete discharge)	1000 cycles	1000 cycles	1000 cycles
Working life (average discharge)	2000 cycles	2000 cycles	2000 cycles
Dimensional features			
Standard dimensions per module (WxHxD)		354x970x55mm (without connectors)	
Number of modules	1	1	2
Gap between holes for fixing frame		900mm...1050mm	
Overall weight	15kg	17kg	22kg
Function and Performance			
MPPT efficiency	99.9%	99.9%	99.9%
Auxiliary battery recharging	From mains supply with an external supply unit		
Recharging time from mains supply	1h	2h	4h
General Data			
Temperature Operating Range	-20°C...+60°C	-20°C...+60°C	-20°C...+60°C
Humidity Operating Range	0-95%, without condensation	0-95%, without condensation	0-95%, without condensation
Output connections		MC4 (or equivalent)	
Visual interface	Led	Led	Led